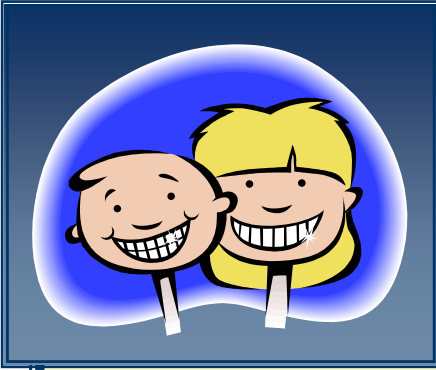


You Are Invited To Attend a CHAMPS  
Upcoming Live On-Line Webcast



## **ORAL HEALTH BASICS FOR THE PRIMARY CARE PROVIDER**

**Tuesday, June 24, 2008**  
11:30 AM – 1:00 PM Mountain Time

**Presented by Michael E. Crutcher, DDS**

Community Health Center of the Black Hills, Rapid City, SD

**TARGET PARTICIPANTS:** CHC primary health care providers and leadership including doctors, mid-levels, nurses, dentists, dental hygienists, clinical support staff, and CEOs

*In our search for better health for our patients, there is a key body part we are neglecting....the mouth! Evidence for connections between oral health and systemic health exist, and integrating oral health into the existing patient care processes is where we need to start.*

### **LEARNING OBJECTIVES:**

- Caries as a completely preventable infectious/transmissible disease
- Detection of Early Childhood Caries (ECC) and use of fluoride varnish in your practice/clinic
- Relationship of Periodontal Disease with cardiovascular disease, diabetes, reproductive outcomes, and pancreatic cancer
- Effects of oral contraceptives, heart medicines, antidepressants, and other prescribed medicines on the oral tissues
- Detection of caries on adolescent/adult teeth: meth mouth and soda caries
- Effects of tobacco products on the oral soft and hard tissues

**CONTINUING MEDICAL EDUCATION (CME) CREDIT:** This event will be offered for 1.5 hours of CME credit. Determination of credit is pending.

### **TO REGISTER, PLEASE FOLLOW THE LINK BELOW:**

<https://compx17.eventcenterlive.com/cfm/ec/register/reg.cfm?BID=1&RegID=ECD3BCB9>

OR visit [www.champsonline.org/Events/Distance\\_Learning.asp](http://www.champsonline.org/Events/Distance_Learning.asp)  
to link directly to the online registration page for this webcast.

**COST:** Participation is FREE for participants from CHAMPS Organizational Members. Please visit [www.champsonline.org/About/CHAMPS/Org\\_Members.asp](http://www.champsonline.org/About/CHAMPS/Org_Members.asp) to determine if your organization is a current member. **Fees apply for participants from other organizations:** \$75/webcast link, \$15/person for CME credit (billed after the event)

**PLEASE NOTE:** ADVANCE REGISTRATION IS REQUIRED. Registration CLOSES 24 hours before the live event. Please register once for each computer being used to view the event. (Multiple participants are encouraged to share computers.)

Questions? Contact [andrea@champsonline.org](mailto:andrea@champsonline.org) or call 303-861-5165 x285

Community Health Association of Mountain/Plains States (CHAMPS)

